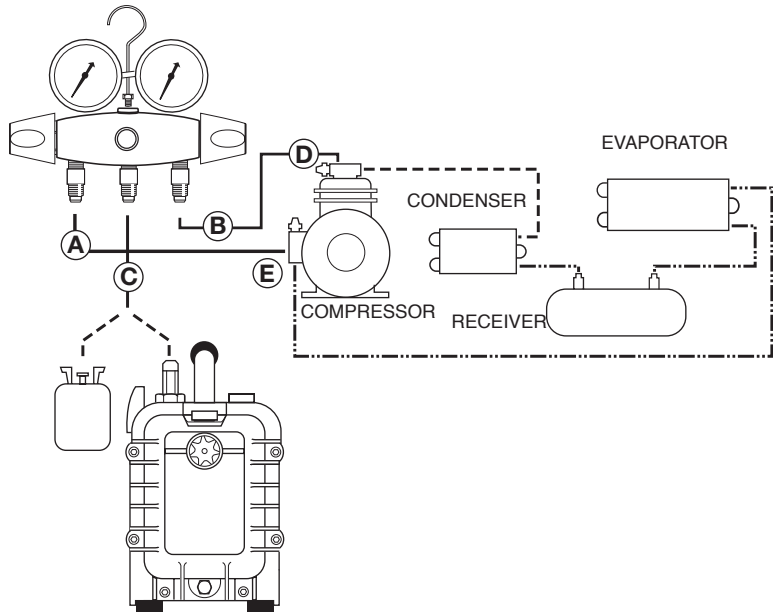


## Directions For Use



Caution: Always consult equipment manufacturer's service manual or instruction sheet for recommended procedures.

	MANIFOLD			COMPRESSOR	
	A	B	C	D	E
	Low Side Blue	High Side Red	Charging and Evacuation Port Yellow	Discharge Service Valve Red	Suction Service Valve Blue
To Observe Operating Pressures	Closed	Closed		Back Seated & Cracked Open	Back Seated & Cracked Open
To Charge Refrigerant Through Suction Valve	Open	Closed	Connect Line to Refrigerant Supply	Back Seated & Cracked Open	Front Seated
To Charge Oil Through Suction Valve	Open	Closed	Connect Line To Oil Supply	Back Seated	Front Seated
To Charge Liquid Refrigerant Through Discharge Valve	Closed	Open	Connect Line To Refrigerant	Midway Open	
To Build Low Pressure; For Control Setting Or Leak Detecting	Open	Open	Refrigerant Line Closed	Back Seated & Cracked Open	Midway Open
To Purge Refrigerant From Discharge Valve	Closed	Open	Refrigerant Line Open	Back Seated & Cracked Open	
To Evacuate With Auxiliary Vacuum Pump	Open	Open	Connect To Vacuum Pump	Midway Open	Midway Open

## LIMITED WARRANTY

Manifold bar has a lifetime warranty, while the components, i.e. gauges, hoses, handles, hose holders, etc. are covered under the limited warranty policy. Products are warranted for a period of one year from date of shipment by JB and limited to repair, replacement or credit, if in our opinion are defective due to workmanship and/or materials. Defective components should be returned to the wholesaler from which the product was purchased for evaluation.

Manifolds are designed for use with all refrigerants except ammonia (R-717). Working pressures are limited to gauge dial range. Use of this manifold under any other conditions voids the warranty.

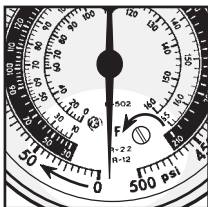
## FOR PROFESSIONAL USE ONLY

JB manifolds are designed for use by technically trained AC/R service engineers only. Due to the high pressures encountered in all systems that this manifold will be used on, plus the dangers due to the physical and chemical nature of refrigerants and oils present in all systems, misapplication could result in injury or death.

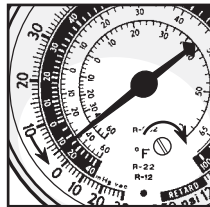
Each gauge is individually tested and calibrated prior to shipment. Due to its sensitivity, the gauge may need to be "zeroed in" prior to usage.

#### Adjusting Gauge Recal to Zero

1. Remove lens.
2. Turn recal screw **slightly** in the opposite direction that pointer is to be moved. Maximum recal screw adjustment is 1/2 turn. Over adjustment will permanently destroy calibration.
3. Replace lens.



Turn recal screw counterclockwise. Pointer turns clockwise.



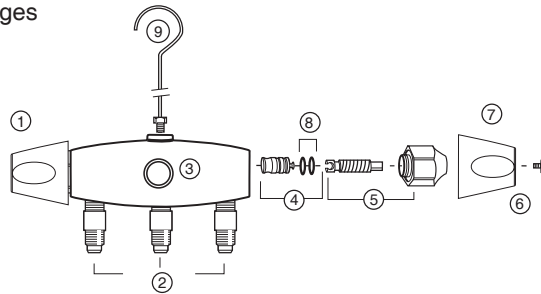
Turn recal screw clockwise. Pointer turns counter-clockwise.

**Gauges are sensitive instruments.**

**Over adjustment and/or being subjected to pressures over dial range are not covered under warranty terms.**

#### REPAIR PARTS

See your wholesaler for a complete line of gauges



NO. REF.	PART NO.	DESCRIPTION
1	MR-601	Handwheel & Screw
2	U1-4A	1/4" Intake
3	MR-520	Sight Glass
4	MR-505	Piston w/Seat & O-Rings
5	MR-606	Stem & Nut

NO. REF.	PART NO.	DESCRIPTION
6	MR-601	Handwheel & Screw
7	MR-503	Handwheel Screws (2)
8	MR-509	O-Ring (2)
9	M2-102N	Hanging Hook

# PLATINUM™



#### DEEP VACUUM PUMPS

Featuring  
Heavy Duty,  
High Performance  
1/2 HP, 60 Cyc Motor

DV-42N	1.5 CFM
DV-85N	3 CFM
DV-142N	5 CFM
DV-200N	7 CFM
DV-285N	10 CFM

Also Available With  
Dual Voltage Motors

Technical service: 800-323-0811  
E-Mail: sales@jbind.com  
Web Site: www.jbind.com



## CHARGING AND TESTING ZEPPELIN™ 2-Valve Brass/Aluminum Manifold

With Free  
Floating,  
Double O-Ring  
Piston Seal



LIMITED WARRANTY  
INSTRUCTIONS PARTS LIST