

ECM Unit Bearing Motors

- Constant speed program works to maintain speed even in restricted airflow situations
- 15" Leads with Lyall plug
- Cast iron
- Vertical up or horizontal mounting
- Suitable for use in evaporator and condenser applications
- 5 drilled and tapped mounting holes allows for standard 3-hole and Hussmann 4-hole mounting.



- Traditional 3 Point Mount = Red & White
- New Hussmann 4 Point Mount = Green & Red
- *O4-R6711 replaces: Hussmann SVC #110.441.0546*

Replaces 6, 9, 12, 13, 14, 15 & 16 Watt P.S.C. and Shaded Pole Motors

Part #	Volts	Watts	Amps	RPM	Rotation	A Dim.
O4-R6711	115	6,9,12	.20/.30	1550	CW	2.53"
O4-R6811	115	14,15,16	.47/.58	1550	CW	2.53"

ECM Unit Bearing Walk-in Cooler Replacement Motor

- Replacement for SSC 50 watt motors on HTPG, HTP, Russell Coil, and Witt Units
- Cross Reference -
115 Volt - 08216124
230 Volt - 08216125

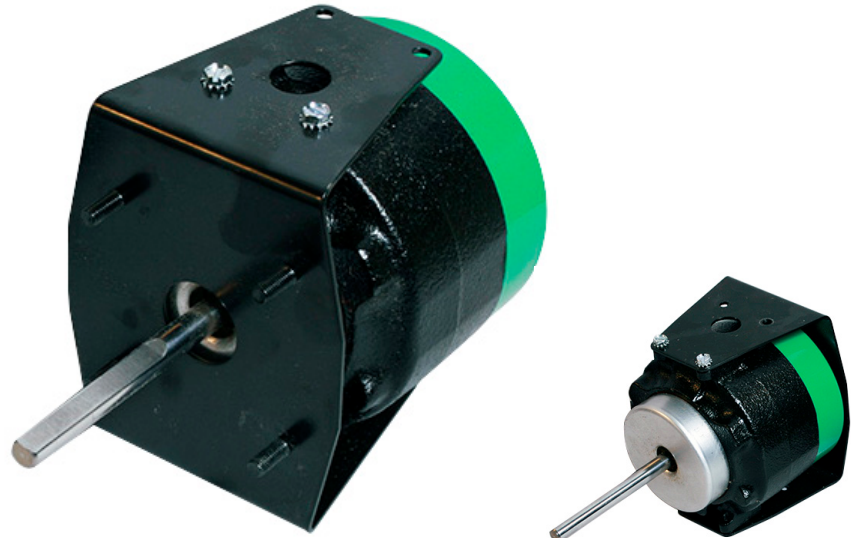


Part #	Volts	Watts	Amps	RPM	Rotation	A Dim.
O4-R8124	115	50	1.25	1550	CCW	2.78"
O4-R8125	230	50	0.60	1550	CCW	2.78"

ECM Unit Bearing Replacement For 3.3" Diameter Motors

Heatcraft Replacement Motors - Bohn, Chandler, Climate Control and Larkin

- Walk-in Cooler Applications
- Low Temperature Oil
- Bracket may be reversed for rear bolt (shaft down) applications
- Operating temperature:
-20°F(-29°C) to 104°F(40°C)
- 16" Leads with Lyall plug
- Cast iron
- Shaft down & horizontal mounting
- Suitable for use in evaporator or condenser applications



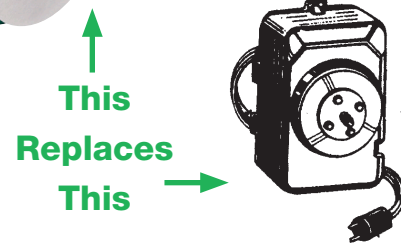
Part #	HP	Amps	Volts	Rotation	RPM	Shaft	A Dim.
O4-R6355	1/15	1.25	115	CW	1550	1.95" × 5/16"	3.2"
O4-R6350	1/15	1.25	115	CCW	1550	1.95" × 5/16"	3.2"
O4-R6365	1/15	0.77	230	CW	1550	1.95" × 5/16"	3.2"
O4-R6360	1/15	0.77	230	CCW	1550	1.95" × 5/16"	3.2"

ECM Unit Bearing Replacement For GE 44 Frame Motors

- Used on Hussmann, Tyler & Hill Phoenix Supermarket cases
- Operating temperature:
Evaporator fan duty only
-20°F(-29°C) to 40°F(4°C)
- 16" Leads with Lyall plug
- Cast iron
- Shaft vertical up & horizontal mounting



Featuring an extended hub to ensure proper fan blade location



Part #	Watts	Amps	Volts	Rotation	RPM	Shaft	A Dim.
O4-R5443	9	0.45	115	CW	1650	1/4" × 20	2.78"
O4-R5444	16	0.55	115	CW	1850	1/4" × 20	2.78"