

CladLite® Concrete Equipment Pads

Description

CladLite® is a lightweight concrete mounting pad designed to support HVAC outdoor units and other outdoor equipment. It provides the strength and durability of concrete, while being up to 80% lighter than solid concrete. Available in both 2" and 3", depending on local building code requirements.

Application

- HVAC outdoor units
- Installation: pad should be placed on compacted level soil, gravel, or harder surfaces, including but not limited to concrete or asphalt.

Features

- Lightweight, durable, and optimized for HVAC outdoor unit weights
- EPS foam core
 - Vibration-dampening
 - Full foam bottom resists settling
 - Unaffected by water, soil, fungus or bacteria
- Continuous steel reinforcement
- Concrete gray color
- Unaffected by UV exposure or extreme weather
- Drillable for securing unit ($\frac{1}{4}$ x $1\frac{1}{4}$ " Tapcon® recommended)

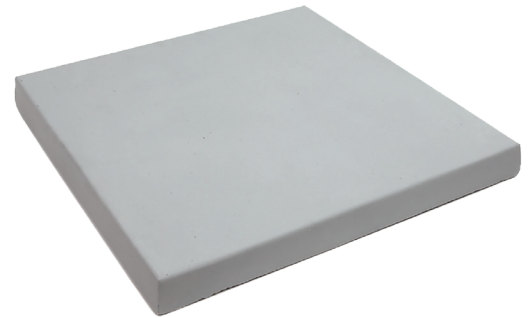
Specifications

- 3000+ PSI reinforced concrete; ASTM Type 1 EPS foam core
- Recommended temperature range: -48°F to 180°F
- Heat/flame resistance:
 - Resists incidental torch contact
 - Not to be used under continuous heating devices, such as water heaters
- Tested per ASTM C67 (flawless performance under 25-cycle testing regimen)
- Tested per ASTM D2299. Does not crack, flake, or warp when subjected to...
 - R-22 or R134a refrigerant
 - Compressor oil
 - Salt solution (20% by volume)
 - Synthetic canine urine

Made in USA by DiversiTech

Warranty

Limited Lifetime Warranty



General Characteristics

2" Thick Pads

CATALOG NUMBER	SIZE (IN.)	ESTIMATED ALLOWABLE LOAD	QUANTITY PER PALLET	PAD WEIGHT
1636-2	16x36x2	480 LBS	25	39 LBS
2424-2	24x24x2	432 LBS	25	30.2 LBS
2436-2	24x36x2	576 LBS	25	61 LBS
2442-2	24x42x2	648 LBS	25	57 LBS
2454-2	26x54x2	792 LBS	25	84 LBS
26-2	26x2 Round	480 LBS	25	33 LBS
2626-2	26x26x2	480 LBS	25	43 LBS
30-2	30x2 Round	576 LBS	25	95 LBS
3030-2	30x30x2	576 LBS	25	36 LBS
3036-2	30x36x2	648 LBS	25	42.7 LBS
3040-2	30x40x2	696 LBS	25	52.8 LBS
3143-2	31x43x2	744 LBS	25	70 LBS
32-2	32x2 Round	624 LBS	25	71.2 LBS
3232-2	32x32x2	624 LBS	25	44 LBS
3434-2	34x34x2	672 LBS	25	51 LBS
3636-2	36x36x2	720 LBS	25	62.9 LBS
3640-2	36x40x2	768 LBS	25	70.9 LBS
3648-2	36x48x2	864 LBS	25	87.8 LBS
3654-2	36x54x2	936 LBS	25	93 LBS
3842-2	38x42x2	816 LBS	25	87 LBS
4147-2	41x47x2	912 LBS	25	115 LBS

3" Thick Pads

CATALOG NUMBER	SIZE (IN.)	ESTIMATED ALLOWABLE LOAD	QUANTITY PER PALLET	PAD WEIGHT
1636-3	16x36x3	480 LBS	20	48 LBS
2424-3	24x24x3	432 LBS	20	42.6 LBS
2436-3	24x36x3	576 LBS	20	59.5 LBS
2448-3	24x48x3	720 LBS	20	83.5 LBS
2626-3	26x26x3	480 LBS	20	49.5 LBS
3030-3	30x30x3	576 LBS	20	61.5 LBS
3036-3	30x36x3	648 LBS	20	73.1 LBS
3040-3	30x40x3	696 LBS	20	94 LBS
3060-3	30x60x3	936 LBS	15	130 LBS
3143-3	31x43x3	744 LBS	20	74 LBS
32-3	32x3 Round	624 LBS	20	67 LBS
3232-3	32x32x3	624 LBS	20	67.7 LBS
3237-3	32x37x3	684 LBS	20	73 LBS
3345-3	33x45x3	792 LBS	20	99.1 LBS
3636-3	36x36x3	720 LBS	20	80.4 LBS
3640-3	36x40x3	768 LBS	20	97.2 LBS
3648-3	36x48x3	864 LBS	20	109.1 LBS
3650-3	36x50x3	888 LBS	15	148 LBS
3660-3	36x60x3	1008 LBS	15	163 LBS
3842-3	38x42x3	816 LBS	20	119.6 LBS
3870-3	38x70x3	1152 LBS	10	181 LBS
4042-3	40x42x3	840 LBS	10	158 LBS
4054-3	40x54x3	984 LBS	15	167 LBS
4062-3	40x62x3	1080 LBS	10	167 LBS
4147-3	41x47x3	912 LBS	15	155 LBS
4183-3	41x83x3	1344 LBS	10	231 LBS
4550-3	45x50x3	996 LBS	15	184 LBS
4558-3	45x58x3	1092 LBS	15	203 LBS
4766-3	47x66x3	1212 LBS	10	219 LBS
4848-3	48x48x3	1008 LBS	15	184 LBS
5053-3	50x53x3	1092 LBS	15	197 LBS
5056-3	50x56x3	1128 LBS	10	212 LBS
5058-3	50x58x3	1152 LBS	10	212 LBS
5070-3	50x70x3	1296 LBS	10	257 LBS
5252-3	52x52x3	1104 LBS	10	197 LBS
5557-3	55x57x3	1200 LBS	10	237 LBS
6067-3	60x67x3	1380 LBS	10	284 LBS

To utilize maximum load rating, the weight should be evenly distributed across the pad surface.