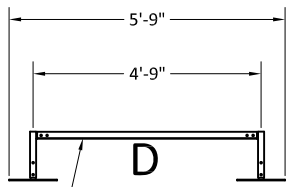


**Plan View**

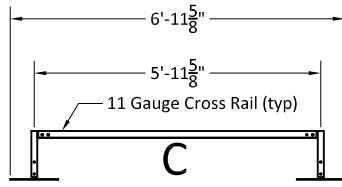
**Plan View**

**Plan View**

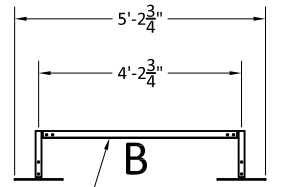
**Plan View**



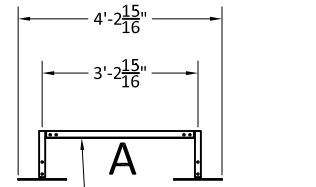
**Side View**



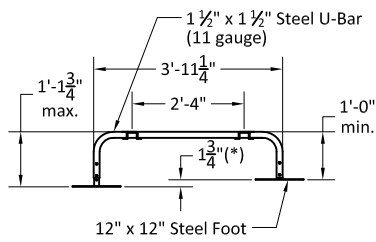
**Side View**



**Side View**



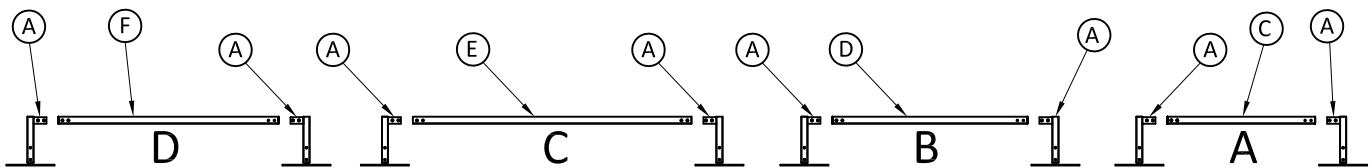
**Side View**



**Typical End View**

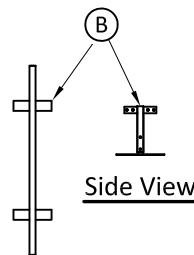
(\*) - Height is adjustable in 1/4" or 1/2" increments

**Important Note:** The installer is responsible for tethering and bolting units to withstand wind and/or seismic loads.



**PARTS LIST**

- (A) Single 1 1/2" x 1 1/2" Steel U-Bar w/Feet (SS100)
- (B) Double 1 1/2" x 1 1/2" Steel U-Bar w/Feet (SS101)
- (C) 11 Gauge Type "A" Cross Rails (SS36)
- (D) 11 Gauge Type "B" Cross Rails (SS48)
- (E) 11 Gauge Type "C" Cross Rails (SS70)
- (F) 11 Gauge Type "D" Cross Rails (SS55)



Note - Super Stand standard sections (Type A, B, C or D) can be combined or expanded by replacing any Single U-Bar with a Double U-Bar

**Plan View**

Note - All assembly hardware is included



**SUPER STAND OPTIONS**

www.quick-sling.com  
 email: info@quick-sling.com  
 fax: 1-(800)-699-0423

Quick Sling, LLC  
 391 W. Water Street  
 Taunton, MA 02780  
 1-(800)-699-0453