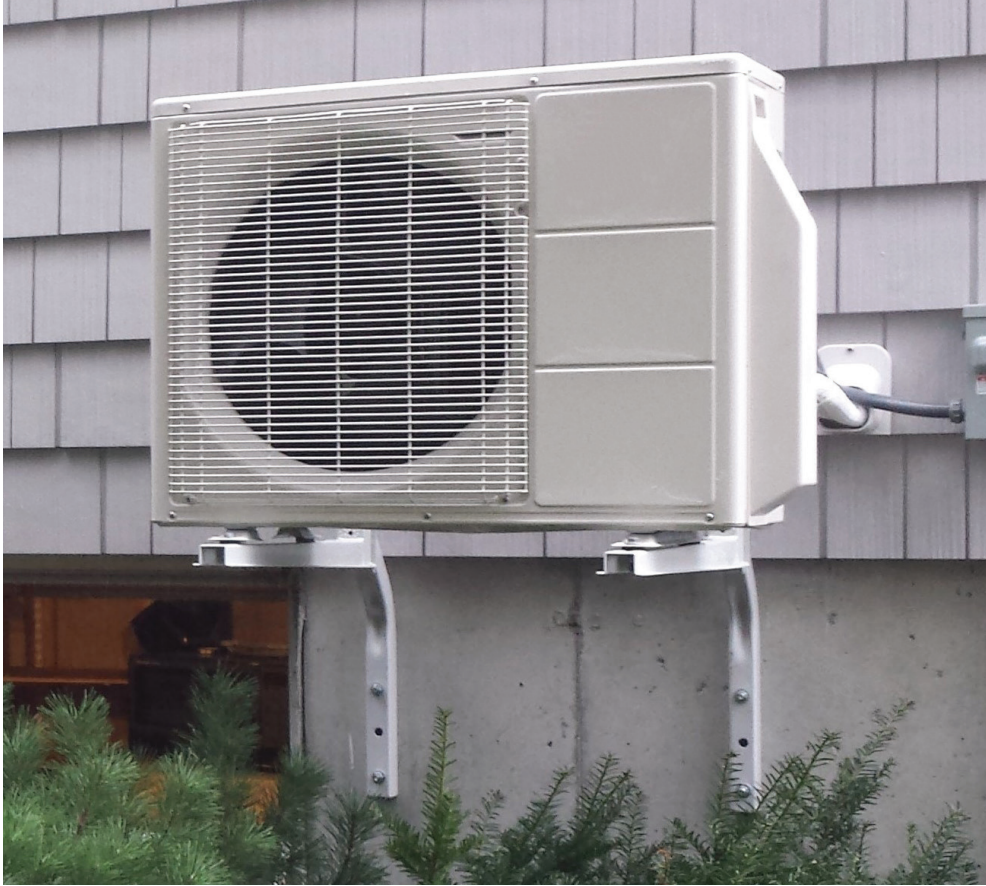


EQUIPMENT MOUNTING SOLUTIONS

Product Selection Guide



featuring

QUICK-SLING®



REVOLUTIONIZING THE WAY
HVAC/R SYSTEMS ARE
MOUNTED AND INSTALLED





QUICK-SLING®

TABLE OF CONTENTS

MINI-SPLIT MOUNTING SOLUTIONS	3 - 10
UNITARY A/C MOUNTING SOLUTIONS	11
VRF/VRV MOUNTING SOLUTIONS	12 - 13
AIR HANDLERS	14 - 15
UNIT HEATER SWIVEL BRACKETS	16 - 18
BOILER/TANKLESS WATER HEATER BRACKETS	19
ACCESSORIES	20 - 24
MOUNTING BLOCKS & FEET	25 - 27
DUCTED SPLIT SYSTEMS	28 - 35



Quick-Sling® is revolutionizing the way HVAC/R systems are installed. Most Quick-Sling mounting systems come partially assembled and some can be installed in as little as 5 minutes, saving hours of labor time and unneeded part costs! Offering unmatched installation flexibility, Quick-Sling products provide superior protection and safety for all types of HVAC/R equipment, including condensing units, heat pumps and mini-splits.

Quick-Sling product lines are OEM recommended and patented for their quality engineering. Developed by an HVAC contractor for HVAC contractors, these innovative products meet federal, state and local building and safety codes. Many of the stands and brackets are hurricane-approved by the Florida Building Commission.

If you're ready to save money, time and headache, turn to Quick-Sling for your mounting system solution. There's nothing like it and nothing better.



MINI-SPLIT MOUNTING SOLUTIONS

Protect Your Work and Your Customer's Investment

Our line of Mini-Split Stands and Brackets are engineered to provide a safe and stable platform to mount virtually any outdoor mini-split condensing unit or heat pump unit. Elevating valuable equipment protects it from damage caused by lawn mowers, pets, snow and flooding. It also makes installation and maintenance faster and easier. The full line of products includes Mini-Split Stands and Mini-Split Wall Brackets.



MINI-SPLIT STANDS

Our full line-up of mini-split stands consist of many different sizes, configurations and materials to fit all types of installations, from BASIC offerings to more feature-rich PRO options. They provide a safe, stable platform for mounting ductless condensers and are quicker to install than many alternatives.



QSMS1206



QSMS1201



QSMS1201-PAL

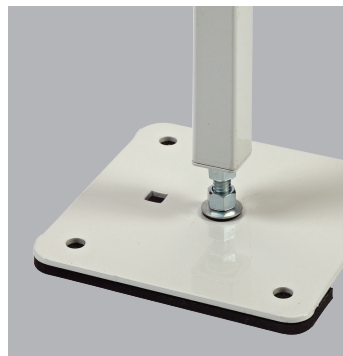
	BASIC Great Value	STANDARD Hurricane/ Seismic Code Compliant	PRO Ultimate Weather Resistance
MATERIAL	Powder-coated galvanized steel	Powder-coated steel	Powder-coated aluminum
STRENGTH	Heavy-duty steel construction	Heavy-duty steel construction	Lighter than steel with same holding capacity
CORROSION PROTECTION	Excellent corrosion protection	Excellent corrosion protection	Superior corrosion protection; ideal for coastal/harsh environments
APPLICATION OPTIONS	Single Fan	Single Fan Unit Dual Fan Unit Large Cabinet Units Horiz. Air Discharge Units Combo Unit Multi-Unit	Single Fan Unit Dual Fan Unit Large Cabinet Units



MINI-SPLIT STANDS CONT.

With the most robust offering of mini-split stands in the industry, we make it easy to choose the right one for the job, whether it's for a single residential mini-split install or a complex multi-unit commercial project.

MATERIAL	SINGLE FAN UNIT STANDS	DUAL FAN UNIT STANDS	DOUBLE STACK	LARGE CABINET STANDS	HORIZONTAL AIR DISCHARGE UNITS	COMBO UNIT STAND	MULTI-UNIT STAND
SINGLE FAN GALVANIZED STEEL	QSMS1206 QSMS1806						
STAINLESS STEEL	QSMS1201-SS QSMS1801-SS QSMS2401-SS	QSMS1202-SS					
POWDER-COATED ALUMINUM	QSMS1201-PAL QSMS1801-PAL QSMS2401-PAL	QSMS1202-PAL QSMS1802-PAL QSMS2402-PAL					
POWDER-COATED STEEL	QSMS1200 QSMS1201 QSMS1800 QSMS1801 QSMS1801-3 QSMS2400 QSMS2401	QSMS1202 QSMS1802 QSMS2402	QSMS1203 QSMS1203-N	QSMS1204 QSMS1804 QSMS2404	QSMS1205 QSMS1805 QSMS2405	QSMS4000-12 QSMS4000-18 QSMS4000-24	QSMS3001-12 QSMS3001-18 QSMS3001-24 QSMS3001-12EXT QSMS3001-18EXT QSMS3001-24EXT
UNPAINTED ALUMINUM	QSMS1201-AL QSMS1801-AL QSMS2401-AL	QSMS1202-AL QSMS1802-AL QSMS2402-AL					



Choosing mini-split stands by Mounting Hole Depth can narrow the options. We offer mini-split stands with five different mounting hole depth options to make your installation even more seamless.

DUAL FAN MINI-SPLIT STANDS



The Quick-Sling® Dual Fan Unit Stand is designed to be extra stable to accommodate the taller dimensions of a dual fan outdoor condensing unit.

MODEL NUMBERS

12"	QSMS1202
18"	QSMS1802
24"	QSMS2402

FEATURES

- Available in 12", 18" or 24" heights
- 18" and 24" high stands come with additional stabilizer arms
- Made from strong 14 gauge square tubing and 11 gauge steel capable of supporting up to 400 lbs
- 8 points of vibration isolation

DOUBLE STACK MINI-SPLIT STAND

The Quick-Sling® Double Stack Mini-Split Condensing Unit Stand mounts two single fan mini-split condensing units one above the other. This allows for two systems to only take up the footprint of a single system, reducing the overall installation space required.



QSMS1203

QSMS1203-N

MODEL NUMBERS

12"	QSMS1203
12"	QSMS1203-N

FEATURES

- Made from strong 14 gauge square tubing
- Each 6" x 6" foot is made from 11 gauge steel and is adjustable up to 1.25" in height
- Four 3/8" holes allow the stand feet to be easily secured to any surface
- 50 durometer rubber pads are pre-installed on each foot to reduce vibration
- Rubber washers are provided to create four points of anti-vibration isolation for each mounting shelf
- Each stand comes with two offset mounting arms slotted to fit most all single fan outdoor mini-split units. The offset mounting arms allow heat pumps to be staggered to ensure the top unit does not drip on the bottom. (Narrow version with over/under configuration available.)
- All necessary hardware is included
- Holds total of 400 lbs - 600 lbs on the bottom shelf and 200 lbs on the top shelf

PITCHED ROOF BRACKET

The Pitched Roof Bracket provides a strong and stable platform to mount an outdoor mini-split unit to a sloped roof.



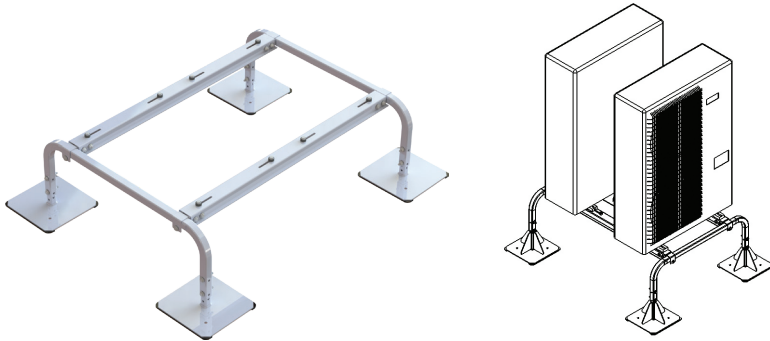
QSPR1000

FEATURES

- Made from electro-galvanized powder-coated steel
- Mounting hardware and level included
- Adjustable from 9° - 45° roof pitch

COMBO MINI-SPLIT STAND

The Combo Unit Stand accommodates two single or double outdoor mini-splits. Ideal for rooftop installations. Made from heavy duty 1-1/2" square tubing and large 12" x 12" square feet.



MODEL NUMBERS	
12"	QSMS4000-12
18"	QSMS4000-18
24"	QSMS4000-24

FEATURES

- Constructed of 1-1/2" 11 gauge steel tubing and 11 gauge steel rails
- Available in 12", 18" & 24" height
- Holds up to 900 lbs
- 12" x 12" 7 gauge feet for ground or roof mounting
- Two 1/2" holes in each foot to secure the stand

ALUMINUM EQUIPMENT STAND

The Aluminum Equipment Stands accommodate one or more outdoor mini-split condensing units. Mounting rails are adjustable and the stands use captive fasteners for quick & secure equipment mounting. Extensions can be added to a base to mount multiple units on a single stand.

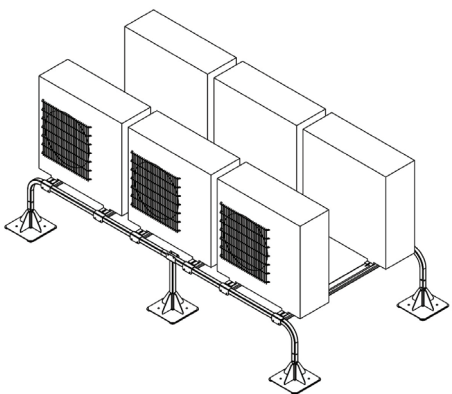


QSTD1403-AL

HEIGHT	BASE STAND	EXTENSION STAND	APPLICATION
14"	QSTD1403-AL	QSTD1403-ALX	Mini-Split Outdoor Equipment
	QSTD1404-AL	QSTD1404-ALX	Traditional Split Systems or Two Fan Mini-Split
24"	QSTD2403-AL	QSTD2403-ALX	Mini-Split Outdoor Equipment
	QSTD2404-AL	QSTD2404-ALX	Traditional Split Systems or Two Fan Mini-Split

MINI-SPLIT MULTI-UNIT SUPER STANDS

The Quick-Sling® Mini-Split Multi-Unit Super Stand® accommodates up to six outdoor mini-split condensing units on a single stand. With the addition of the extender kits, condensing units can be added in increments of two per kit.



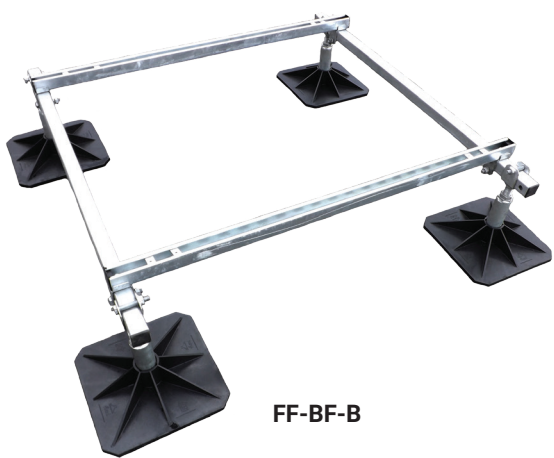
HEIGHT	BASE STAND	EXTENDER KIT
12"	QSMS3001-12	QSMS3001-12EXT
18"	QSMS3001-18	QSMS3001-18EXT
24"	QSMS3001-24	QSMS3001-24EXT

FEATURES

- Constructed of 1-1/2" 11 gauge steel tubing and 11 gauge steel rails
- 12" x 12" 7 gauge feet for ground or roof mounting
- Available in 12", 18" and 24" heights
- Two 1/2" holes in each foot to secure the stand

FLEXI FRAME EQUIPMENT STANDS

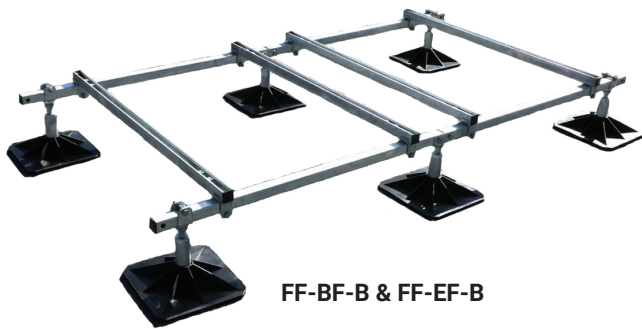
The galvanized steel Flexi Frame is a strong weather-resistant stand for mounting mini-splits and VRF equipment. The Flexi Frame can be configured with a base on multiple extensions to meet most application requirements.



ITEM NUMBERS	DESCRIPTION
FF-BF-B	Flexi Base Frame, 47-1/4" Rail
FF-EF-B	Flexi Extension Frame, 47-1/4" Rail
FF-BF-1500-B	Flexi Base Frame, 59" Rail
FF-EF-1500-B	Flexi Extension Frame, 59" Rail
FF-L1621	Flexi Frame Leg, 16-21" Tall Ext (2/PK)

FEATURES

- Finish: 1.6-inch square galvanized steel beams and crossbars
- Feet: 12.6-inch square polypropylene design with integral rubber mat
- Legs: 1.9-inch diameter steel tube with M24 stud adjuster and thick U-clevis
- Standard height adjustable from 12 to 16". Extension Leg FF-L1621 for 16 to 21" sold separately.



MINI-SPLIT WALL BRACKETS

The Quick-Sling® line of Wall Brackets provides a quick, safe and stable means to mount an outdoor mini-split unit to multiple types of wall structures. Designed to allow the equipment manufacturer's recommended clearance for proper airflow.



QSWB1000
Heavy Duty, Flat Wall
Mounting Bracket

FEATURES

- Made from powder-coated 11 gauge steel square tubing
- 500 lbs load capacity
- Four points of anti-vibration with 50 durometer rubber washers
- Includes galvanized mounting hardware
- The QSWB1000 "L" brackets can be mounted in either the up-and-out or down-and-out orientation
- Mounting shelf is 26" in depth and pre-slotted for quick unit mounting



QSWB2000/QSWB4000
Flat or Siding
Wall Mounted Bracket

FEATURES

- Made from powder-coated 14 gauge steel with 350 lbs load capacity
- Six points of vibration isolation with 50 durometer rubber washers
- Adjustable to 34" in width
- All necessary hardware included
- QSWB4000 is made from 11 gauge steel and can hold up to 500 lbs
- Both models are available in stainless steel (QSWB2000SS / QSWB4000SS)
- Hurricane rated Wall Brackets

WALL TYPE	WEIGHT CAPACITY	ITEM NUMBER
Flat Wall	500 lbs	QSWB1000
Siding	350 lbs	QSWB2000
Siding	500 lbs	QSWB4000
Foundation	300 lbs	QSWB3000



QSWB1100
Heavy Duty, Flat Wall or Wall
Stud Mounted Bracket

FEATURES

- Made from powder-coated 11 gauge steel square tubing
- Includes two slider mounting tracks for mounting to standard wall studs
- 500 lbs load capacity
- Four points of anti-vibration with 50 durometer rubber washers
- Includes galvanized mounting hardware
- The QSWB1000 "L" brackets can be mounted in either the up-and-out or down-and-out orientation
- Mounting shelf is 26" in depth and pre-slotted for quick unit mounting



QSWB3000
Concrete Foundation
Mounted Bracket

FEATURES

- Made from powder-coated 11 gauge steel square tubing
- 300 lbs load capacity
- Four points of anti-vibration with 50 durometer rubber washers
- 19" shelf depth, plus 7" of clearance from Z bend allows ample space between wall and equipment
- Reduces potential vibration through walls



MINI-SPLIT WALL BRACKETS CONT.

The Hef-T-Bracket™ line of wall brackets are used to securely support condensing units on to a wall. Available in a variety of sizes and materials.

FEATURES

- Lightweight aluminum alloy construction
- Polyester epoxy resin protective coating
- Installation hardware included
- 220 lbs weight capacity
- Mounts on studs 12" or 16" on center
- Fits most units up to 1 ton capacity



230-A2S

Light Duty, Aluminum Wall Bracket



230-B2M/230-B2L
Top Hinged, Med and Large Galvanized Steel Hef-T-Bracket

FEATURES

- Quick and easy installation
- Features a cross bar that is attached to the wall, and two L-shaped brackets that are hooked and bolted into place on the cross bar
- Fastened using the bolts and anti-vibration washers provided
- Electro-galvanized, powder-coated steel plate material
- Spirit level included
- Patented top hinge ensures unit can be easily leveled on any type of wall surface
- For use with single fan outdoor units up to 500 lbs



230-B2XL
Extra Large Galvanized Steel Hef-T-Bracket



230-B3M
Medium Galvanized Steel Hef-T-Bracket



230-B3L
Large Galvanized Steel Hef-T-Bracket

FEATURES

- Quick and easy installation
- Features a cross bar that is attached to the wall, and two L-shaped brackets that are hooked and bolted into place on the cross bar
- Fastened using the bolts and anti-vibration washers provided
- Electro-galvanized, powder-coated steel plate material
- Spirit level included
- Extra long arms to provide additional clearance between wall and unit (230-B2XL)
- For use with single fan outdoor units up to 500 lbs

UNITARY A/C WALL BRACKETS

Air Conditioner Brackets are used for hanging A/C condensers and heat pumps to the side of a home or building. Installing these brackets avoids time lost waiting for finished grade or landscaping. Available in 10-gauge powder-coated steel or aluminum. Supports up to 600 lbs.

FEATURES

- Load rating of 600 lbs per pair
- (2) brackets included with item number
- Avoids time lost waiting for finished grade or landscaping prior to installation of AC unit.
- Pre-punched 7/16 in. holes for easy installation to wall structure. Pre-punched 15/64 in. holes for equipment mounting
- Mount at any height to allow for easy maintenance under units.

POWER-COATED STEEL

FEATURES

- The ACB line of wall brackets are Approved by the Florida Building Commission and are High Velocity Hurricane Zone (HVHZ) approved.
- Made of heavy duty 10 ga. (9/64 in. thick) steel and powder coated grey finish for added durability.



ACB-42

MODEL NUMBERS

30"	36"	42"	48"
ACB-30	ACB-36	ACB-42	ACB-48

ALUMINUM

FEATURES

- Made of heavy duty aluminum, excellent for coastal and other harsh environments



ACB-42-AL

MODEL NUMBERS

30"	36"	42"	48"
ACB-30-AL	ACB-36-AL	ACB-42-AL	ACB-48-AL

VRF/VRV SUPER STANDS

The Quick-Sling® Super Stands® are designed to provide a strong and stable mounting platform for most all brands of VRF/VRV outdoor units. Super Stands come partially assembled to make installation quick and easy. Most all application configurations can be accomplished with only 9 single unit base item numbers and 9 extensions item numbers making selecting the correct stand quick and easy.

Hurricane and Seismic Rated



QSSB48-18

STAND HEIGHT	BASE SINGLE UNIT STANDS			EXTENSIONS		
	MOUNTING RAIL LENGTH			MOUNTING RAIL LENGTH		
	48"	62"	74"	48"	62"	74"
12"	QSSB48-12	QSSB62-12	QSSB74-12	QSSX48-12	QSSX62-12	QSSX74-12
18"	QSSB48-18	QSSB62-18	QSSB74-18	QSSX48-18	QSSX62-18	QSSX74-18
24"	QSSB48-24	QSSB62-24	QSSB74-24	QSSX48-24	QSSX62-24	QSSX74-24



SLIDING RAIL DESIGN



EXTENSION KIT



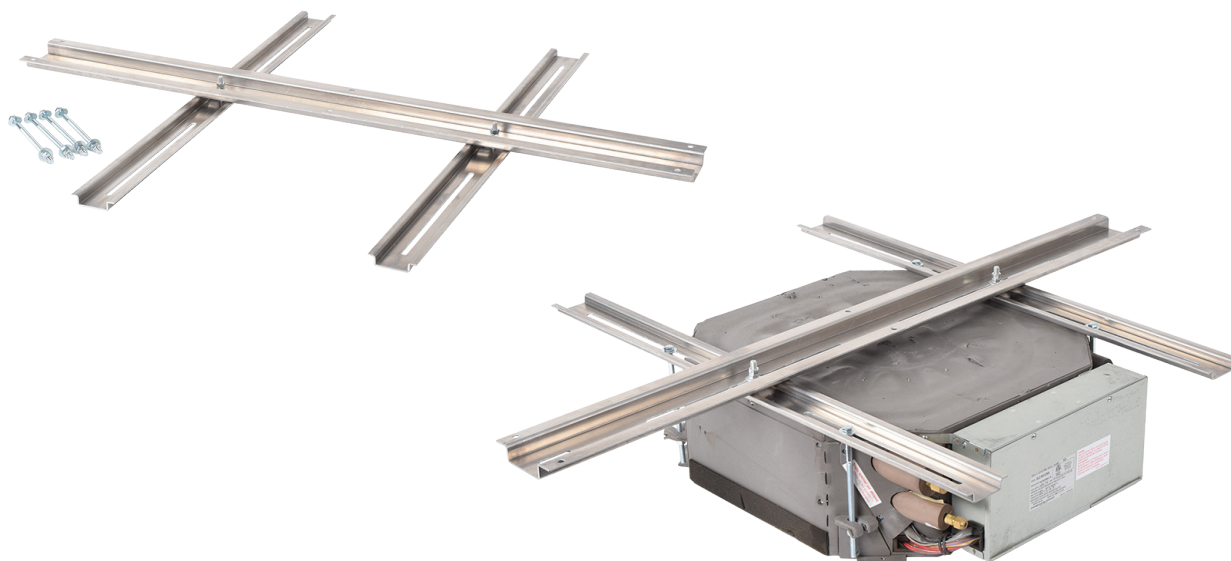
MOUNTING SLOTS

FEATURES

- Main supports are made from 11 gauge, 1½" steel square tubing
- Super Stands are modular and can accommodate a single unit or multi-unit configurations
- Super Stand feet are 12" x 12" 7 gauge steel with 3/8" holes for optional mounting
- Capable of being installed on rubber roofs for non-penetrable applications or secured to roof structure when required
- Plastic feet are available for use in non-penetrating applications
- Available in 12", 18" or 24" heights
- Adjustable depth and mounting slots will fit most all equipment mounting holes configurations
- Super Stands are approved by the Florida Building Commission for use in High Velocity Hurricane Zones
- Three cross rail sizes allow for hundreds of unique size combinations to meet most any application need
- Rated for use in seismic applications

DUCTLESS CASSETTE HANGERS

The new Ductless Cassette Hangers are an innovative bracket design that is made of lightweight aluminum to provide quick and easy installation of ductless cassettes. Only two SKUs are needed to be compatible with most of the ductless cassettes on the market today. The built-in adjustability allows the alignment of the unit after it has been hung.



SIZE	ITEM NUMBER	WEIGHT CAPACITY
Small	QSCH1000	200 lbs
Large	QSCH2000	200 lbs

FEATURES

- Lightweight aluminum construction
- Strong enough for large cassettes
- Adjustable position after installation
- Hardware included
- Only 2 part numbers needed to match most all the cassette manufacturers on the market today

AIR HANDLER STANDS

VERTICAL AIR HANDLER STANDS

Quick-Sling® Vertical Air Handler Stands are built strong and stable and are adjustable to fit most all manufacturers products.



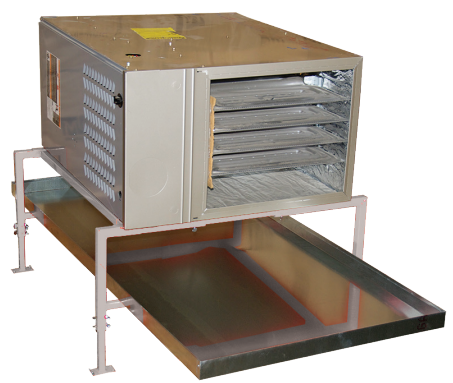
ARM WIDTH	12" STAND HEIGHT	18" STAND HEIGHT	24" STAND HEIGHT
19"	—	QSTD5000	QSTD6000
23"	—	QSTD5001	—
27"	QSTD4002	—	QSTD6002

FEATURES

- Adjustable left to right in 1" increments up to 6"
- The 18" and 24" stands include 2 stabilizer arms for additional support
- Each stand has a 500 lbs load capacity
- Each 11 gauge 6" x 6" foot has pre-drilled holes to accept ¼" hardware to mount to supporting structure
- Stand is constructed of 14 gauge square steel tubing

HORIZONTAL AIR HANDLER STAND

The QSTD Horizontal Air Handler Stand provides faster installation and accomodates a drain pan (not included).



VERSION	ITEM NUMBER	WEIGHT CAPACITY
Standard Duty	QSTD1000	500 lbs

FEATURES

- Standard Duty Stand is adjustable in 3 directions. Made of 14 gauge steel and can hold 500 lbs

HANGING BRACKETS

The original Quick-Sling® Hanging Bracket provides a quick, safe and solid platform to mount air handlers and furnaces.

APPLICATION	ITEM NUMBER	WEIGHT CAPACITY
Standard Duty	QSLG2000	400 lbs



FEATURES

- Solid, 14 gauge steel square tube construction
- Stable, non-swinging platform
- Custom mounting hardware included
- 3-dimensional adjustment
- 400 lbs max capacity
- Includes vibration isolation pads and washers

UNIT HEATER SWIVEL BRACKETS

The Quick-Sling® line of Unit Heater Swivel Brackets are uniquely designed to provide fast and easy installation of most all ceiling mounted Unit Heaters. The innovative swivel design allows for 360° rotation for setting the perfect air flow direction prior to hard piping the unit. Multiple ceiling mounting options adapt to various installation applications.

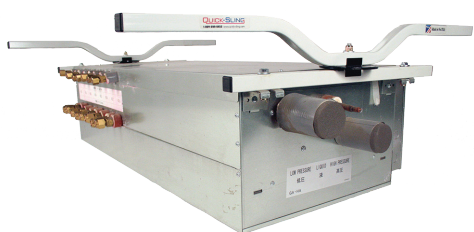
SWIVEL BRACKET STYLE	MOUNTING BOLT LOCATIONS	"U" CEILING MOUNT	FLUSH CEILING MOUNT
"H" Bracket	4	QSWI1000	QSWI3000
"I" Bracket	2	QSWI2000	QSWI4000, QSWI4001
36" Spreader Plate	4	-	QSWI3001
17" Spreader Plate	4	-	QSWI3002
Heavy Duty "I" Bracket	2	-	QSWI5001
Heavy Duty "I" Bracket Lrg	2	-	QSWI5002
Heavy Duty "H" Bracket Lrg	4	-	QSWI5003
Dual "I" Bracket	4	-	QSWI6000



QSWI3000
Flush Mount "H" Bracket



QSWI1000
"U" Mount, "H" Bracket



QSWI6000



QSWI5003



QSWI5001

UNIT HEATER SWIVEL FLUSH MOUNT W/"H" BRACKET

FEATURES

- 12 points of anti-vibration isolation
- Flush ceiling mount installs on flat roofs and is slotted to receive 3/8" lag bolts at either 16" or 24" on center
- Can be mounted either parallel or perpendicular to joist
- QSWI3001 comes with 36" spreader plate and 36" equipment connection arms and able to hold up to 200 lbs. Perfect for most ducted air handlers.
- QSWI3002 comes with a 17" spreader plate and 36" equipment connection arms and able to hold up to 200 lbs
- Constructed from 14 gauge steel
- 200 lbs capacity



QSWI3000/QSWI3001/QSWI3002/QSWI4000
w/"H" Bracket (QSWI3000/QSWI3001/QSWI3002)
w/"I" Bracket (QSWI4000)

UNIT HEATER SWIVEL "U" MOUNT W/"H" OR "I" BRACKET

FEATURES

- "U" ceiling mount installs on flat or pitched roofs and installs as high as 19.5" or as low as 27.5"
- QSWI1000 comes with two equipment mounting arms for 4 point mounting configuration
- QSWI2000 comes with a single equipment mounting arm for a 2 point mounting configuration
- Hanging arms attach to wood using 2 zip screws & a 4" through bolt for security. Optional steel beam adapters are also available
- Each extension arm individually adjusts in 1" increments
- Constructed from 14 gauge steel
- 200 lbs capacity



QSWI1000/QSWI2000
w/"H" Bracket (QSWI1000)
w/"I" Bracket (QSWI2000)

UNIT HEATER SWIVEL FLUSH MOUNT HEAVY DUTY

FEATURES

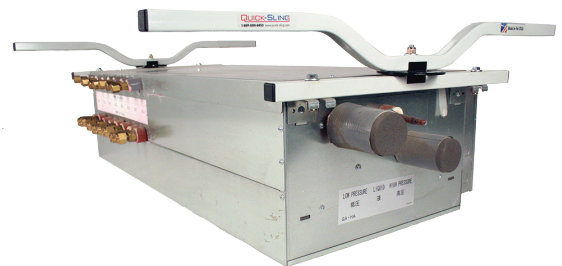
- Heavy duty mounting plate is designed to fit most large unit heaters up to 400 lbs
- Flush ceiling mount installs on flat roofs and is slotted to receive lag bolts at either 16" or 24" on center
- Can be mounted either parallel or perpendicular to joist



BRANCH CIRCUIT CONTROLLER SWIVEL FLUSH MOUNT W/2 "I" BRACKETS

FEATURES

- Dual flush mounts with "I" bracket
- Flush ceiling mount installs on flat roofs and is slotted to receive 3/8" lag bolts at either 16" or 24" on center
- Can be mounted either parallel or perpendicular to joist
- 400 lbs capacity



QSWI6000

BOILER/TANKLESS WATER HEATER BRACKETS

The Quick-Sling® Boiler Bracket is compatible with most wall hung boilers and tankless water heaters.

WALL TYPE	WEIGHT CAPACITY	ITEM NUMBER
Floor	350 lbs	QSBB4000
Wall	350 lbs	QSBB3000



QSBB3000



QSBB4000

FEATURES

- Flexible mounting options
- Adjustable to fit most wall mounted boilers/tankless water heaters
- Made from strong powder-coated steel
- Partially assembled to make installation fast & easy

ACCESSORIES

VIBRATION ISOLATION STRIPS FOR MINI-SPLIT & VRF/VRV

These high-density elastometric-coated, molded and pre-compressed fiberglass strips are UV resistant and designed to provide vibration isolation and allow controlled movement in the fiber media.



QSAC5200



QSAC5101

ITEM NUMBER	FOR USE WITH
QSAC5100	QSMS1200 QSMS1800 QSMS2400
QSAC5101	QSMS1201 QSMS1801 QSMS2401
QSAC5102	QSMS1202 QSMS1802 QSMS2402
QSAC5104	QSMS1204 QSMS1804 QSMS2404
QSAC5105	QSMS1205 QSMS1805 QSMS2405
QSAC5200	QSSB48-** QSSX48-**
QSAC5201	QSSB62-** QSSX62-**
QSAC5202	QSSB74-** QSSX74-**

ROOF BRACKETS

The Quick-Sling® Roof Bracket mounts to Quick-Sling brackets and stands QSWB3000 or the QSMS1200,1201,1202, 1800,1801,1802, 2400, 2401, 2401, protecting the equipment from snow and freezing rain.



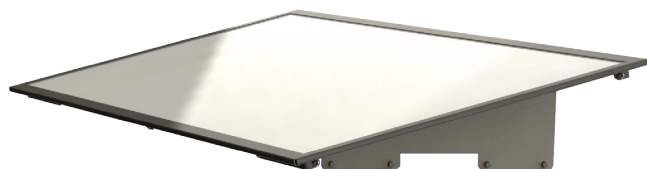
QSRB1000

FEATURES

- Designed to ensure proper airflow around equipment
- Roof made from durable, UV protected twin wall plastic
- Constructed of powder-coated 14 gauge steel
- Assembles in minutes

QUICK-SLING WEATHERSHIELD® ROOF COVER

The Quick-Sling® WeatherShield® shields and protects outdoor ductless condensing units from weather damage. Quick-Sling WeatherShield mounts directly to the mini-split and fits most sizes of equipment.



QSWs1000

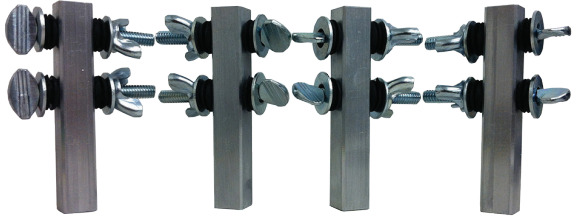


FEATURES

- Mounts directly to the outdoor unit
- Mounting hardware included
- Adjustable to fit the most popular mini-split sizes
- Quick and easy to install
- Strong, UV protected roof material

STEEL BEAM ADAPTERS

The Quick-Sling® steel and wood adapters make it easy to mount Quick-Sling units on wood joists.



QSAC1100/QSAC1000

FEATURES

- Made of aluminum and able to hold up to 250 lbs each
- Slotted to receive 3/8" threaded rod or C-Clamps
- Designed to overcome the obstacle of attaching to steel beams
- All necessary hardware is included

	QTY OF 2	QTY OF 4
Steel Beam Adapters	QSAC1100	QSAC1000
Use with	QSWI1000	QSLG2000
	QSWI2000	

WOOD JOIST ADAPTERS



QSAC2100/QSAC2000

FEATURES

- Made of steel and are 12" long and 2" wide
- Each wood adapter can hold 200 lbs each
- The 1.5" bend simply clips over the wood joist
- All necessary hardware is included

	QTY OF 2	QTY OF 4
Wood Joist Adapters	QSAC2100	QSAC2000
Use with	QSWI1000	QSLG2000
	QSWI2000	

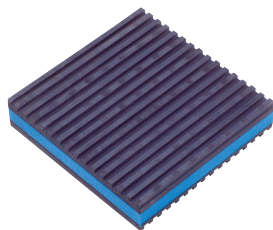
ANTI-VIBRATION PADS

DiversiTech's line of Anti-Vibration Pads provide noise, shock and vibration isolation generated by mechanical equipment. Multiple design options are available to match specific application needs.

PRODUCT	PSI CAPACITY	SIZE RANGE	MATERIAL	AVAILABLE THICKNESSES
EVA	50	2" x 2" - 18" x 18"	Composite Foam and Styrene Butadiene Rubber	7/8"
Iso-Cube	180	2" x 2" - 18" x 18"	Natural Rubber	3/4"
Rubber	50	2" x 2" - 18" x 18"	Natural Rubber	3/8"
Rubber/ Cork	50	2" x 2" - 18" x 18"	Natural Rubber and Cork	7/8"

E.V.A. ANTI-VIBRATION PADS

The latest generation in vibration dampening technology. The most effective vibration dampening pad available on the market. The E.V.A. Pad was tested against other pads at four different vibration settings. In the most severe vibration extremes, the E.V.A. Pad outperforms cork and rubber by a margin of greater than 3:1! This is due to the special composite foam center which is much more structurally sound than cork. It is not affected by oils or chemicals that can break down cork and is much more effective at vibration dampening than solid rubber. All this at a very competitive price. Designed to withstand 50 PSI.



MP-4E

FEATURES

- E.V.A. outperforms cork & rubber 3:1
- Special composite foam center is structurally more sound than cork
- Not affected by oils or chemicals that break down cork
- More effective at vibration dampening than solid rubber

ITEM NUMBER	DESCRIPTION	STD. PACK
MP-2E	2" x 2" x 7/8" E.V.A.	48
MP-3E	3" x 3" x 7/8" E.V.A.	36
MP-4E	4" x 4" x 7/8" E.V.A.	24
MP-6E	6" x 6" x 7/8" E.V.A.	24
MP-12E	12" x 12" x 7/8" E.V.A.	12
MP-18E	18" x 18" x 7/8" E.V.A.	6

ISO-CUBE ECONOMY ANTI-VIBRATION PADS



ISO-4

FEATURES

- Natural rubber pads designed to reduce vibration & noise emanating from refrigeration or AC systems
- Circular design creates suction cup effect reducing the need to bolt the pads down
- The 50 durometer pads will withstand a load of 150 PSI

Natural rubber pads, designed to reduce vibration and noise emanating from refrigeration and air conditioning equipment. The circular design in each pad offers a suction cup effect, which eliminates the need to bolt the pads down. A standard 18" (46cm) pad is divided into eighty-one 2" (5cm) segments, each of which may be cut or torn to provide smaller pads. These 50 durometer pads will withstand a load of 180 PSI with greater resiliency.

ITEM NUMBER	DESCRIPTION	STD. PACK
ISO-2	2" x 2" x 3/4" Iso-Cube	24
ISO-4	4" x 4" x 3/4" Iso-Cube	12
ISO-18	4" x 4" x 7/8" Iso-Cube	6

RUBBER ANTI-VIBRATION PADS

The rubber pads are corrugated on both sides to reduce vibration and noise. Designed to withstand 50 lbs PSI. Ideal for air conditioners, compressors, cooling towers, presses, machines or anywhere vibration control is needed. Elastomeric oil resistant.



MP-3

FEATURES

- Solid rubber construction
- Corrugated on both sides

ITEM NUMBER	DESCRIPTION	STD. PACK
MP-2	2" x 2" x 3/8" Rubber	48
MP-3	3" x 3" x 3/8" Rubber	36
MP-4	4" x 4" x 3/8" Rubber	24
MP-6	6" x 6" x 3/8" Rubber	24
MP-8	8" x 8" x 3/8" Rubber	12
MP-12	12" x 12" x 3/8" Rubber	12
MP-18	18" x 18" x 3/8" Rubber	6

RUBBER/CORK ANTI-VIBRATION PADS

The cork is laminated between two corrugated pads to reduce vibration and noise. designed to withstand 50 lbs PSI. Ideal for air conditioners, compressors, cooling towers, presses, machines or anywhere vibration control is needed. Elastomeric oil resistant.



MP-4C

FEATURES

- Highest quality elastomeric oil-resistant padding
- Corrugated on both sides and laminated to cork center

ITEM NUMBER	DESCRIPTION	STD. PACK
MP-2C	2" x 2" x 7/8" Rubber/Cork	48
MP-3C	3" x 3" x 7/8" Rubber/Cork	36
MP-4C	4" x 4" x 7/8" Rubber/Cork	24
MP-6C	6" x 6" x 7/8" Rubber/Cork	24
MP-12C	12" x 12" x 7/8" Rubber/Cork	12
MP-18C	18" x 18" x 7/8" Rubber/Cork	6

ONE PIECE HEAT PUMP RISERS

Sturdy and stable, DiversiTech's Heat Pump Riser provides the desired elevation for condensers, heat pumps, and air handlers. The one piece, heavy duty plastic unit is manufactured in three heights. Butyl mastic on the top and bottom guarantees no slipping and reduced vibration and noise.



HPR-6

ITEM NUMBER	DESCRIPTION	STD. PACK
HPR-3	Riser - 3"	48
HPR-3BL	Riser - 3", Black	48
HPR-6	Riser - 6"	36
HPR-6BL	Riser - 6", Black	36
HPR-12	Riser - 12"	16

TWO PIECE HEAT PUMP RISERS

Sturdy and stable, DiversiTech's Heat Pump Riser provides the desired elevation for condensers, heat pumps, and air handlers. The two piece, heavy duty plastic unit is manufactured in two heights and an extension. Butyl mastic on the top and bottom guarantees no slipping and reduced vibration and noise.



HPR-6-2PG

ITEM NUMBER	DESCRIPTION	STD. PACK
HPR-3-2P	Two Piece Riser - 3"	32
HPR-6-2P	Two Piece Riser - 6"	16
HPR-3-2PG	Two Piece Black Riser - 3"	32
HPR-6-2PG	Two Piece Black Riser - 6"	16
HPR-EXT	4" Extension	28

ADJUSTABLE EQUIPMENT RISERS

Adjustable equipment risers easily adjust up or down as needed to secure equipment at the correct height. The large center barrel twists up from starting height of 5" to a max of 8". A separate top cap allows for raising or lowering the riser even with equipment already on it. Convenient height markings provided for reference.



AER-8

ITEM NUMBER	DESCRIPTION	STD. PACK
AER-8	Adjustable Equipment Riser - 8"	4
AER-8BL	Adjustable Equipment Riser - 8" Black	4

HEF-T-BLOCK™

Used as mounting bases when condensing units must be bolted down. Available in three lengths. Furnished complete with end caps and mounting bolts. Maximum load capacity is 440 pounds per mounting block. Installation temperature range from -4°F (-20°C) to 140°F (60°C). Hef-T-Blocks fit all mini-split condensing units with a unique sliding rail feature.



ITEM NUMBER	DESCRIPTION	STD. PACK
230-MB14W	14" Hef-T-Block (White) w/End Caps	2
230-MB17W	17" Hef-T-Block (White) w/End Caps	2
230-MB36W	36" Hef-T-Block (White) w/End Caps	2
230-MBCW	Hef-T-Block Replacement End Cap (White)	25

HEF-T-FOOT™

The Hef-T-Foot™ is used to support small pipework, runs of cable tray, or to support condensing units, air source heat pumps or a variety of outdoor equipment. The Hef-T-Foot with strut comes in four lengths - 9.8", 15.7", 23.6", 39.4". They are manufactured from heavy duty recycled rubber and come complete with .8" x 1.6" aluminum strut adhered to the rubber with industrial adhesive. The Hef-T-Foot Mini-Split Installation Kits provide a complete solution for ground mounting an outdoor mini-split unit. The Kit comes with two rubber feet with strut plus the hardware required to secure the outdoor unit to the feet.

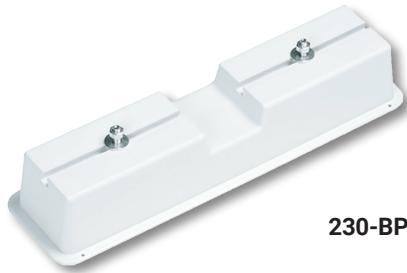


ITEM NUMBER	DESCRIPTION	STD. PACK
FF-250-S	Hef-T-Foot™ - 9.8", with 1.6" x .8" strut	1
FF-250-UNI	Hef-T-Foot™ - 9.8", Universal	1
FF-450-S	Hef-T-Foot™ - 17.7", with 1.6" x .8" strut	1
FF-600-S	Hef-T-Foot™ - 23.6", with 1.6" x .8" strut	1
FF-1000-S	Hef-T-Foot™ - 39.4", with 1.6" x .8" strut	1
FF-450-S-KIT	Hef-T-Foot™ Install Kit - Pair of FF-450-S with Hardware	1
FF-600-S-KIT	Hef-T-Foot™ Install Kit - Pair of FF-600-S with Hardware	1
FF-1000-S-KIT	Hef-T-Foot™ Install Kit - Pair of FF-1000-S with Hardware	1



BASE PADS

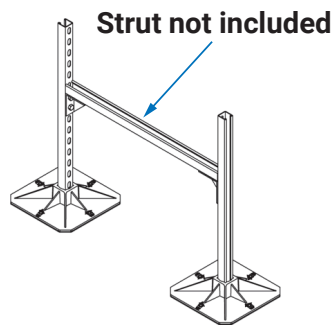
Used as a mounting base when condensing units must be bolted down. Maximum load capacity is 220 lbs. per pad. Sliding rail design for easy and fast installation. Includes mounting bolts. Available in 17" lengths. Ivory color.



230-BP17W

ITEM NUMBER	DESCRIPTION	STD. PACK
230-BP17W	17" Base Pad	10

H-FRAME KITS



FEATURES

- Ideal for supporting ducts, pipes and electrical equipment
- Kits include a pair of feet, brackets and hardware
- 12.5" or 19.7" square feet available

ITEM NUMBER	DESCRIPTION
F-HF-320	H-Frame Kit - 12.5"
F-HF-500	H-Frame Kit - 19.7"

DUCTED SPLIT SYSTEMS

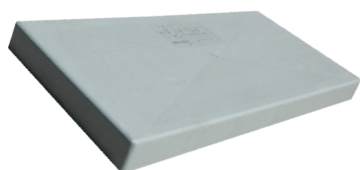
DiversiTech offers the industry's widest selection of pads for HVACR equipment and various other types of equipment. Plastic, concrete and anti-vibration pads are available.

Proven – We made our name in the industry as the premier supplier of HVAC equipment pads over four decades ago and we continue as the market leader today.

All Types – We have all sizes of pads in all forms to meet your exact needs, the widest selection in the industry by far!

Durable – Proven durability with each pad uniquely engineered using different ribbing patterns, thicknesses and depths, as well as base materials for maximum strength and minimum weight.

Simple – Installing DiversiTech pads is easy! Simplify Your Work™!



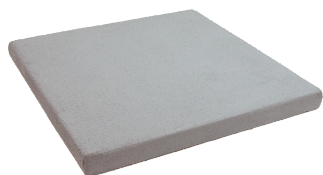
E LITE®



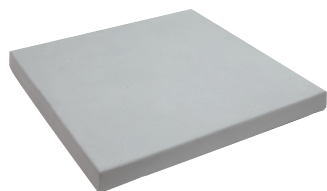
ECOPAD™



HEAT PUMP PAD™



ULTRALITE®



CLADLITE®



HUNKLITE™



THE HURRICANE PAD®

Wind Tables: Visit diversitech.com

E LITE[®] PAD

The most popular plastic DiversiTech pad due to its outstanding durability, uniform strength, and low weight.



2" THICK PADS

ITEM NUMBER	SIZE (IN.)	EST. ALLOW. LOAD	QTY. PER PAL.	PAD WT.
EL2424-2	24 x 24 x 2	840 LBS	24	7 LBS
EL2430-2	24 x 30 x 2	960 LBS	24	9 LBS
EL2436-2	24 x 36 x 2	1080 LBS	24	11 LBS
EL2626-2	26 x 26 x 2	920 LBS	24	8 LBS
EL3030-2	30 x 30 x 2	1080 LBS	24	11 LBS
EL3036-2	30 x 36 x 2	1200 LBS	24	13 LBS
EL3040-2	30 x 40 x 2	1260 LBS	24	14 LBS
EL3232-2	32 x 32 x 2	1160 LBS	24	13 LBS
EL3434-2	34 x 34 x 2	1240 LBS	24	14 LBS
EL3636-2	36 x 36 x 2	1320 LBS	24	16 LBS
EL3640-2	36 x 40 x 2	1400 LBS	24	18 LBS
EL3648-2	36 x 48 x 2	1560 LBS	24	19 LBS
EL3842-2	38 x 42 x 2	1480 LBS	24	19 LBS

3" THICK PADS

ITEM NUMBER	SIZE (IN.)	EST. ALLOW. LOAD	QTY. PER PAL.	PAD WT.
EL1838-3	18 x 38 x 3	1000 LBS	32	16 LBS
EL2424-3	24 x 24 x 3	840 LBS	16	12 LBS
EL2436-3	24 x 36 x 3	840 LBS	16	19 LBS
EL2448-3	24 x 48 x 3	1320 LBS	32	14 LBS
EL3030-3	30 x 30 x 3	1080 LBS	16	20 LBS
EL3232-3	32 x 32 x 3	1160 LBS	16	21 LBS
EL3244-3	32 x 44 x 3	1400 LBS	16	30 LBS
EL3636-3	36 x 36 x 3	1320 LBS	16	28 LBS
EL3640-3	36 x 40 x 3	1400 LBS	16	31 LBS
EL3648-3	36 x 48 x 3	1560 LBS	16	36 LBS
EL3842-3	38 x 42 x 3	1480 LBS	16	33 LBS
EL3870-3	38 x 70 x 3	2040 LBS	16	36 LBS
EL4040-3	40 x 40 x 3	1480 LBS	16	34 LBS
EL4558-3	45 x 58 x 3	1940 LBS	16	33 LBS
EL4848-3	48 x 48 x 3	1800 LBS	16	36 LBS
EL5042-3	50 x 42 x 3	1720 LBS	16	28 LBS
EL5060-3	50 x 60 x 3	2080 LBS	16	40 LBS
EL5070-3	50 x 70 x 3	2280 LBS	16	47 LBS
EL5252-3	52 x 52 x 3	1960 LBS	16	48 LBS
EL5658-3	56 x 58 x 3	2160 LBS	16	43 LBS

FEATURES

- Made in the USA
- Unaffected by UV or weather
- Uniform and generous ribbing provide self-leveling ground support without inserts
- ASTM D2299, ASTM C67

ECOPAD™

The EcoPad™ is made from injection molded plastic, and the application is mainly as a base pad for ground supported equipment. Where local codes supersede the national code and require a pad thicker than 2", use a 3" thick pad.



2" THICK PADS

ITEM NUMBER	SIZE (IN.)	EST. ALLOW. LOAD	QTY. PER PAL.	PAD WT.
EP2424-2	24 x 24 x 2	840 LBS	24	7 LBS
EP2436-2	24 x 36 x 2	1080 LBS	24	11 LBS
EP2626-2	26 x 26 x 2	920 LBS	24	8 LBS
EP3030-2	30 x 30 x 2	1080 LBS	24	11 LBS
EP3036-2	30 x 36 x 2	1200 LBS	24	13 LBS
EP3232-2	32 x 32 x 2	1160 LBS	24	13 LBS
EP3434-2	34 x 34 x 2	1240 LBS	24	14 LBS
EP3636-2	36 x 36 x 2	1320 LBS	24	16 LBS
EP3648-2	36 x 48 x 2	1560 LBS	24	29 LBS
EP3842-2	38 x 42 x 2	1480 LBS	24	19 LBS

3" THICK PADS

ITEM NUMBER	SIZE (IN.)	EST. ALLOW. LOAD	QTY. PER PAL.	PAD WT.
EP1838-3	18 x 38 x 3	1000 LBS	32	16 LBS
EP2424-3	24 x 24 x 3	840 LBS	16	9 LBS
EP2436-3	24 x 36 x 3	1080 LBS	16	19 LBS
EP2448-3	24 x 48 x 3	1320 LBS	32	14 LBS
EP3030-3	30 x 30 x 3	1080 LBS	16	20 LBS
EP3232-3	32 x 32 x 3	1160 LBS	16	21 LBS
EP3434-3	34 x 34 x 3	1240 LBS	16	17 LBS
EP3636-3	36 x 36 x 3	1320 LBS	16	28 LBS
EP3640-3	36 x 40 x 3	1400 LBS	16	31 LBS
EP3648-3	36 x 48 x 3	1560 LBS	16	36 LBS
EP3842-3	38 x 42 x 3	1480 LBS	16	33 LBS
EP3870-3	38 x 70 x 3	2040 LBS	16	36 LBS
EP4040-3	40 x 40 x 3	1480 LBS	16	34 LBS
EP4558-3	45 x 58 x 3	1940 LBS	16	33 LBS
EP4848-3	48 x 48 x 3	1800 LBS	16	29 LBS
EP5042-3	50 x 42 x 3	1720 LBS	16	28 LBS
EP5060-3	50 x 60 x 3	2080 LBS	16	40 LBS
EP5070-3	50 x 70 x 3	2280 LBS	16	47 LBS
EP5252-3	52 x 52 x 3	1960 LBS	16	48 LBS
EP5658-3	56 x 58 x 3	2160 LBS	16	43 LBS

FEATURES

- Durable and lightweight for standard applications
- Unaffected by UV or weather
- Individually engineered ribbing for cost-effective self-leveling ground support
- Made in the USA
- ASTM D2299, ASTM C67

HEAT PUMP PAD

Ideal for snowy climates, the Heat Pump Pad protects the unit with a full 8" clearance above ground. Standard with each unit are 8 anti-vibration pads specifically designed to fit into molded slots at tops of the Heat Pump Pad. These are designed to provide a more quiet operation of the heat pump.



ITEM NUMBER	SIZE (IN.)	ESTIMATED ALLOWABLE LOAD	QTY. PER PALLET	PAD WEIGHT
HP3232-8	32 x 32 x 8	307 LBS	16	18 LBS
HP3636-8	36 x 36 x 8	389 LBS	16	18 LBS

FEATURES

- Pad base is angled outward to direct melting snow and condensate away from the unit
- Built tough for many years of surface
- Pads are nestable and stackable, using minimum space for storage

HUNKLITE™

Solid concrete pad designed for use as external/internal ground support for HVAC equipment. Where local codes supersede the national code and require a pad thicker than 2", use a 3" thick pad.



2" THICK PADS

ITEM NUMBER	SIZE (IN.)	EST. ALLOW. LOAD	QTY. PER PAL.	PAD WT.
L2436-2	24 x 36 x 2	1920 LBS	20	55 LBS
L3636-2	36 x 36 x 2	2400 LBS	15	120 LBS

3" THICK PADS

ITEM NUMBER	SIZE (IN.)	EST. ALLOW. LOAD	QTY. PER PAL.	PAD WT.
L2424-3	24 x 24 x 3	1440 LBS	15	52 LBS
L2436-3	24 x 36 x 3	1920 LBS	15	106 LBS
L3030-3	30 x 30 x 3	1920 LBS	15	69 LBS
L3036-3	30 x 36 x 3	2160 LBS	15	94 LBS
L3048-3	30 x 48 x 3	2640 LBS	15	120 LBS
L3232-3	32 x 32 x 3	2080 LBS	15	87 LBS
L3636-3	36 x 36 x 3	2400 LBS	10	105 LBS
L3642-3	36 x 42 x 3	2640 LBS	10	120 LBS
L3648-3	36 x 48 x 3	2880 LBS	10	135 LBS
L3842-3	38 x 42 x 3	2720 LBS	10	215 LBS

FEATURES

- No buoyancy — ideal for coastal regions
- Made in the USA
- Lightweight concrete and hollow bottom with rib support to add strength and remove weight to make easier to handle
- Will support concrete anchors
- ASTM D2299, ASTM C67

ULTRALITE®

The lightest weight cement-based pad for ease of handling and proven durability.



3" THICK PADS

ITEM NUMBER	SIZE (IN.)	ESTIMATED ALLOWABLE LOAD	QTY. PER PALLET	PAD WEIGHT
UC1636-3	16 x 36 x 3	368 LBS	15	18 LBS
UC1838-3	18 x 38 x 3	400 LBS	30	20.2 LBS
UC1838-3CA	18 x 38 x 3	400 LBS	15	20.2 LBS
UC2424-3	24 x 24 x 3	336 LBS	15	18 LBS
UC2424-3CA	24 x 24 x 3	336 LBS	15	18 LBS
UC2430-3	24 x 30 x 3	390 LBS	15	23 LBS
UC2436-3	24 x 36 x 3	432 LBS	15	26 LBS
UC2436-3CA	24 x 36 x 3	432 LBS	15	26 LBS
UC2442-3	24 x 42 x 3	480 LBS	15	28 LBS
UC2448-3	24 x 48 x 3	528 LBS	15	28 LBS
UC2448-3CA	24 x 48 x 3	528 LBS	15	29 LBS
UC2626-3	26 x 26 x 3	368 LBS	15	17 LBS
UC3030-3	30 x 30 x 3	432 LBS	15	23 LBS
UC3030-3CA	30 x 30 x 3	432 LBS	15	24 LBS
UC3036-3	30 x 36 x 3	460 LBS	15	31 LBS
UC3036-3CA	30 x 36 x 3	460 LBS	15	30 LBS
UC3040-3	30 x 40 x 3	512 LBS	15	33 LBS
UC3132-3L	31 x 32 x 3	460 LBS	15	27 LBS
UC3232-3	32 x 32 x 3	464 LBS	15	26 LBS
UC3232-3CA	32 x 32 x 3	464 LBS	15	27 LBS
UC3237-3	32 x 37 x 3	504 LBS	15	27 LBS
U3353-3	33 x 53 x 3	595 LBS	15	68 LBS
UC3434-3	34 x 34 x 3	496 LBS	15	27 LBS
UC3445-3	34 x 45 x 3	584 LBS	15	39 LBS
UC3539-3L	35 x 39 x 3	528 LBS	15	36 LBS
UC3636-3	36 x 36 x 3	528 LBS	15	34 LBS

3" THICK PADS

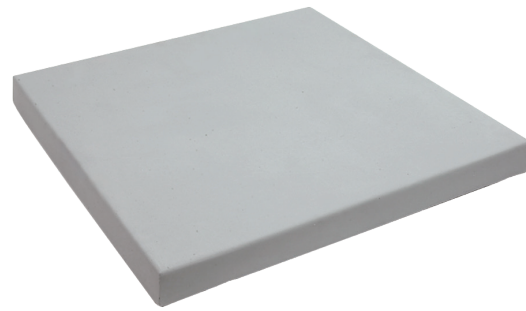
ITEM NUMBER	SIZE (IN.)	ESTIMATED ALLOWABLE LOAD	QTY. PER PALLET	PAD WEIGHT
UC3636-3CA	36 x 36 x 3	528 LBS	15	35 LBS
UC3642-3	36 x 42 x 3	576 LBS	15	32 LBS
UC3642-3CA	36 x 42 x 3	576 LBS	15	33 LBS
UC3648-3	36 x 48 x 3	624 LBS	15	37 LBS
UC3648-3CA	36 x 48 x 3	624 LBS	15	38 LBS
U3650-3	36 x 50 x 3	659 LBS	15	38 LBS
U3654-3	36 x 54 x 3	715 LBS	15	71 LBS
U3660-3	36 x 60 x 3	723 LBS	15	49 LBS
UC3842-3	38 x 42 x 3	592 LBS	15	35 LBS
U3865-3	38 x 65 x 3	701 LBS	15	85 LBS
U3870-3	38 x 70 x 3	709 LBS	15	113 LBS
UC4040-3	40 x 40 x 3	592 LBS	15	34 LBS
UC4040-3CA	40 x 40 x 3	592 LBS	15	35 LBS
UC4042-3	40 x 42 x 3	608 LBS	15	36 LBS
UC4044-3L	40 x 44 x 3	620 LBS	15	38 LBS
U4054-3	40 x 54 x 3	719 LBS	15	81 LBS
U4550-3	45 x 50 x 3	712 LBS	15	81 LBS
U4558-3	45 x 58 x 3	776 LBS	15	93 LBS
U4848-3	48 x 48 x 3	720 LBS	15	85 LBS
U4854-3	48 x 54 x 3	768 LBS	15	91 LBS
U4866-3	48 x 66 x 3	864 LBS	15	108 LBS
U5053-3	50 x 53 x 3	776 LBS	15	92 LBS
U5056-3	50 x 56 x 3	800 LBS	15	97 LBS
U5252-3	52 x 52 x 3	784 LBS	15	94 LBS
U5557-3	55 x 57 x 3	848 LBS	15	109 LBS

FEATURES

- Heavy-duty, yet ultra-lightweight
- Freeze/thaw, UV, chemical & flame-resistant for long-term life outdoors
- Earthquake Code compliant pads available for use in the relevant West Coast locations
- ASTM D2299, ASTM C67
- Extensive selection of sizes available including wedge-shaped pad

CLADLITE®

The strength and look of a perfectly poured concrete pad without the extreme weight!



2" THICK PADS

ITEM NUMBER	SIZE (IN.)	ESTIMATED ALLOWABLE LOAD	QTY. PER PALLET	PAD WEIGHT
2436-2	24 x 36 x 2	576 LBS	24	61 LBS
2442-2	24 x 42 x 2	648 LBS	24	57 LBS
3030-2	30 x 30 x 2	576 LBS	24	36 LBS
3036-2	30 x 36 x 2	648 LBS	12	43 LBS
3040-2	30 x 40 x 2	696 LBS	12	53 LBS
3232-2	32 x 32 x 2	624 LBS	12	44 LBS
3434-2	34 x 34 x 2	672 LBS	12	51 LBS
3636-2	36 x 36 x 2	720 LBS	12	63 LBS
3640-2	36 x 40 x 2	768 LBS	12	71 LBS
3648-2	36 x 48 x 2	864 LBS	12	88 LBS

3" THICK PADS

ITEM NUMBER	SIZE (IN.)	ESTIMATED ALLOWABLE LOAD	QTY. PER PALLET	PAD WEIGHT
1636-3	16 x 36 x 3	480 LBS	20	48 LBS
2424-3	24 x 24 x 3	432 LBS	20	43 LBS
2436-3	24 x 36 x 3	576 LBS	20	60 LBS
2448-3	24 x 48 x 3	720 LBS	20	84 LBS
3030-3	30 x 30 x 3	576 LBS	20	62 LBS
3036-3	30 x 36 x 3	648 LBS	10	73 LBS
3232-3	32 x 32 x 3	624 LBS	10	68 LBS
3237-3	32 x 37 x 3	684 LBS	20	73 LBS
3636-3	36 x 36 x 3	720 LBS	10	80 LBS
3640-3	36 x 40 x 3	768 LBS	10	97 LBS
3648-3	36 x 48 x 3	864 LBS	10	109 LBS
3660-3	36 x 60 x 3	1008 LBS	10	163 LBS
3842-3	38 x 42 x 3	816 LBS	10	120 LBS
4042-3	40 x 42 x 3	840 LBS	10	158 LBS
4550-3	45 x 50 x 3	996 LBS	10	184 LBS
4558-3	45 x 58 x 3	1092 LBS	10	203 LBS
4766-3	47 x 66 x 3	212 LBS	10	219 LBS
4848-3	48 x 48 x 3	1008 LBS	10	184 LBS
5053-3	50 x 53 x 3	1092 LBS	10	197 LBS

FEATURES

- High PSI strength concrete surrounding a lightweight core
- Up to 80% lighter than solid concrete for ease of installation
- Freeze/thaw, UV, chemical & flame resistant for long-term life outdoors
- ASTM D2299, ASTM C67
- Extensive selection of sizes available including round pads

THE HURRICANE PAD™ H-CLASS

Simplify meeting building and hurricane codes including Miami-Dade County regulations.



150 MPH RATING

ITEM NUMBER	SIZE (IN.)	QTY. PER PALLET	ESTIMATED ALLOWABLE LOAD
H1840-4	18 x 40	16	552
H2424-4	24 x 24	16	432
H2436-4	24 x 36	8	576
H2448-4	24 x 48	8	576
H3030-4	30 x 30	8	576
H3232-4	32 x 32	8	624
H3636-4	36 x 36	8	720
H3642-4	36 x 42	8	792
H3648-4	36 x 48	8	864
H3652-4	36 x 52	8	912
H3654-4	36 x 54	8	936
H3656-4	36 x 56	8	960
H3672-4	36 x 72	8	1152
H3852-4	38 x 52	8	936
H3865-4	38 x 65	8	1092
H3872-4	38 x 72	8	1176
H4040-4	40 x 40	8	816
H4242-4	42 x 42	8	864
H4558-4	45 x 58	8	1092
H5557-4	55 x 57	8	1200

Wind Tables: Visit diversitech.com

Potential Hurricane Winds Map

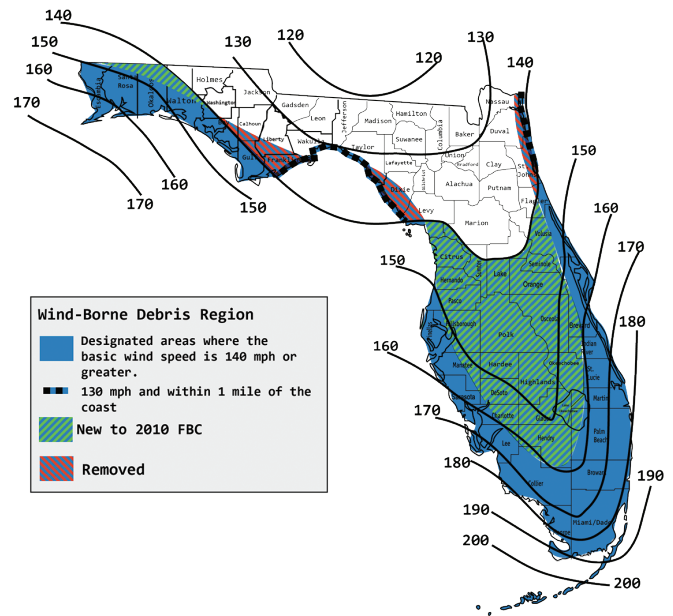


Figure 1609B Risk Category IV Buildings and Structures and Category III healthcare facilities

FEATURES

- 3 different levels of pads for different wind zones: up to 150 MPH, up to 175 MPH, and 175 MPH Miami-Dade
- 175 MPH Miami-Dade units are solid concrete pads with internal steel (larger units) and fibers reinforcement
- Superior screw pull out strength
- ASTM D2299, ASTM C67

THE HURRICANE PAD™ T-CLASS

175 MPH RATING

ITEM NUMBER	SIZE (IN.)	QTY. PER PALLET	ESTIMATED ALLOWABLE LOAD
HT1840-4	18 x 24	10	1104
HT2436-4	24 x 36	5	1152
HT2448-4	24 x 48	5	1152
HT3030-4	30 x 30	5	1152
HT3232-4	32 x 32	5	1248
HT3636-4	36 x 36	5	1440
HT3648-4	36 x 48	5	1728
HT3842-4	38 x 42	5	1728
HT4040-4	40 x 40	5	1632
HT4242-4	42 x 42	5	1728
HT4558-4	45 x 58	5	2184



THE HURRICANE PAD™ MD

175 MPH RATING - MIAMI-DADE



ITEM NUMBER	SIZE (IN.)	QTY PER PALLET	ESTIMATED ALLOWABLE LOAD
HMD1840-4	18 x 40 x 4	5	1840
HMD2448-4	24 x 48 x 4	5	1840
HMD3030-4	30 x 30 x 4	5	1920
HMD3636-4	36 x 36 x 4	5	2400
HMD3648-4	36 x 48 x 4	5	2880
HMD4040-4	40 x 40 x 4	5	2720

Wind Tables: Visit diversitech.com

JOIN  **CONTRACTOR
REWARDS**

**BUY HVAC/R PRODUCTS,
GET REWARDED**

ENROLL

Sign Up at
ContractorRewards.com

Scan for
Details



UPLOAD

Upload receipts
for purchases of
DiversiTech
products.

**GET
REWARDED**

Shop the extensive
online REWARDS
catalog.

IT'S THAT EASY!



EQUIPMENT MOUNTING SOLUTIONS

DiversiTech Corporation
Duluth, GA 30097
P 800.995.2222
F 678.542.3700

LIT-CAT-EM
1224
©2024 DiversiTech Corp.
diversitech.com